

**2311
SHIRLEY
DRESS
SMALL
CUT 1
FRONT**

ATTN: PRINTER
PLEASE NOTE: to ensure
pattern is to scale this box
must measure 100mm x
100mm.



© 2004 - Fitz patterns. All rights reserved. Designs and Patterns by Fitz Patterns are protected by Australian Copyright Laws and International Treaties. No part of this pattern/design and/or its written content may be reproduced or transmitted in any form or by any means, electronic or mechanical, including photocopying, recording, or by any information storage and retrieval system without the express written consent of Fitz Patterns. Fitz Patterns presents this information in good faith. No warranty is given, nor are results guaranteed.



© 2005 - Fitz patterns. All rights reserved. Designs and Patterns by Fitz Patterns are protected by Australian Copyright Laws and International Treaties. No part of this pattern/design and/or its written content may be reproduced or transmitted in any form or by any means, electronic or mechanical, including photocopying, recording, or by any information storage and retrieval system without the express written consent of Fitz Patterns. Fitz Patterns presents this information in good faith. No warranty is given, nor are results guaranteed.

**2311
SHIRLEY
DRESS
SMALL
CUT 4
TIE**



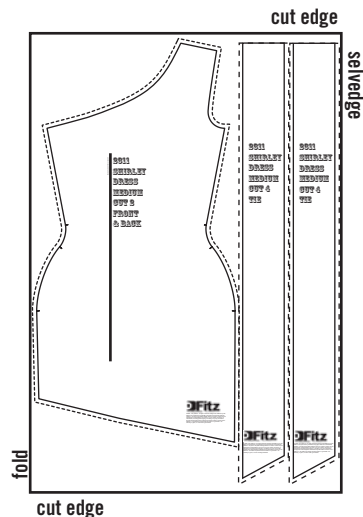
© 2005 - Fitz patterns. All rights reserved. Designs and Patterns by Fitz Patterns are protected by Australian Copyright Laws and International Treaties. No part of this pattern/design and/or its written content may be reproduced or transmitted in any form or by any means, electronic or mechanical, including photocopying, recording, or by any information storage and retrieval system without the express written consent of Fitz Patterns. Fitz Patterns presents this information in good faith. No warranty is given, nor are results guaranteed.

2311 SHIRLEY



“Shirley, it's quite exciting to be sleeping here in this new room Shirley, you're my reason to get out of bed before noon” Billy Bragg

AH YES BUT SURELY IT'S NOT AS EXCITING A NEW DRESS? MAKE THIS PARTY FROCK AND BE READY TO ROCK IN A DAY.



START HERE...

1. Cut out pattern.
2. Measure your bust, waist and hips and check that they are not larger than the pattern pieces.
3. Pin pattern to fabric or trace around it with dressmakers chalk. Cut out fabric.
4. Sew side seams and shoulder seam.
5. Try dress on inside out. Pin and resew seams until dress fits.
6. Press seams on both sides and then press flat (this will make the garment look much better).
6. Finish edges by overlocking, zigzagging or binding seams.
7. Hem top, bottom and armhole. Press hems.
8. Join pieces of the tie at the flat edge. Press either sides of the seam and then press flat.
9. Sew the two pieces of the tie together and turn inside out. Fold raw edges in and stitch shut.

Craft:
craftzine.com

Fitz
For making individuals. www.fitzpatterns.com

© 2006 - Fitz patterns. All rights reserved. Designs and Patterns by Fitz Patterns are protected by Australian Copyright Laws and international Treaties. No part of this pattern/design and or its written content may be reproduced or transmitted in any form or by any means, electronic or mechanical, including photocopying, recording, or by any information storage and retrieval system without the express written consent of Fitz Patterns. Fitz Patterns grants users permission to print one hard copy for personal use only. Fitz Patterns presents this information in good faith. No warranty is given, nor are results guaranteed.