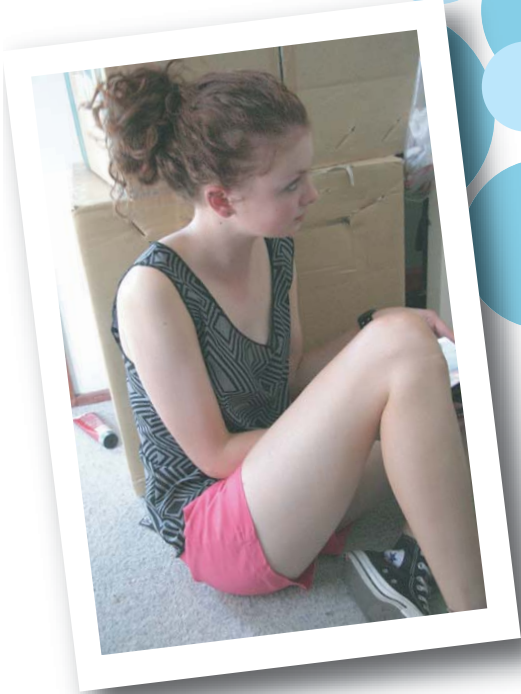


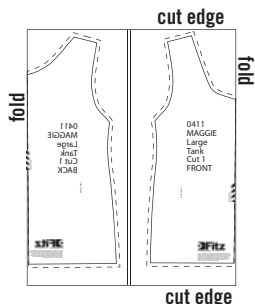
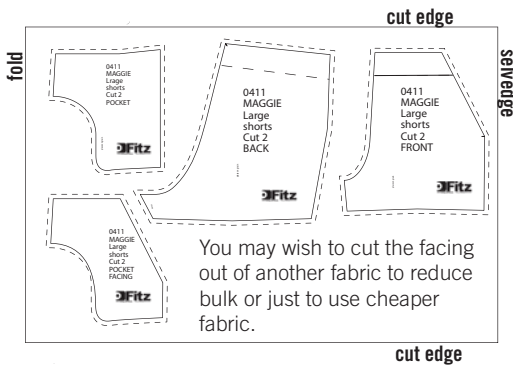
0411 Maggie



1. Check your pattern has been printed to scale by measuring the test box is 10cm x 10cm (3 6/8"). Note that a seam allowance of 10mm (1cm or 3/8") has been allowed. In this pattern, the dotted line is the cutting line and the unbroken line is the stitching line.

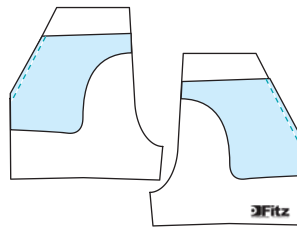
2. Cut out pattern pieces from paper sheet. Try not to use your sewing shears as paper blunts their edge.

3. Layout and pin to fabric as per guide below. Cut out fabric following dotted line.

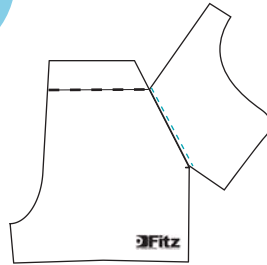


Fabric for shorts layout is 150cm wide. Fabric for singlet top can be 115cm wide.

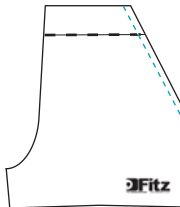
4. Sew pocket facings to front pieces of shorts.



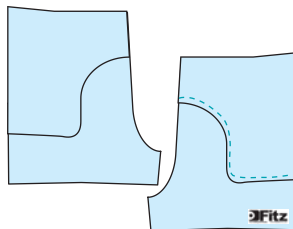
5. Press the pieces out flat. Sew about 1 mm away from the seam stitching the pocket facing to the seam allowance. This stops the pocket facing from showing



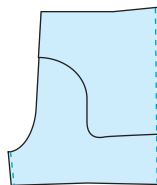
6. Sew decorative stitching.



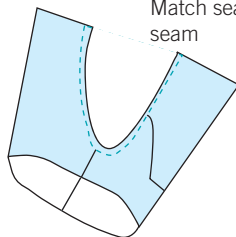
7. Sew the pocket to the pocket facing. You can sew through the front layer if you want the stitching to show. If not only sew through the facing.



8. Sew side seams of shorts, starting with the outside seam and pressing the seam open.

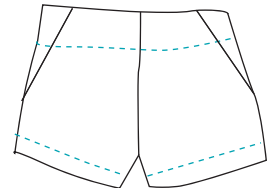


9. Turn one leg inside out and insert in other. Match seams and sew crotch seam

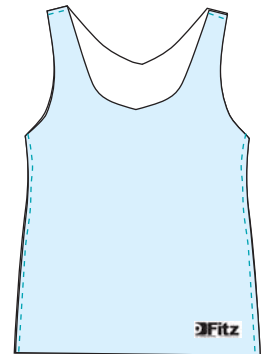


10. Press elastic casing at top over, by 5cm. Wrap length of elastic around your waist until snug, then cut with a 1cm overlap. Sew ends of elastic together. Pin the seam to aside seam of the shorts and pin other side to other seam. Pin elastic evenly to all seams. fold fabric over and stretch elastic and fabric to encase.

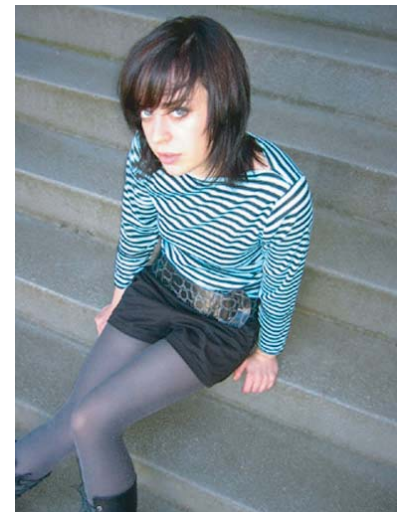
11. Finish edges and hem shorts.



11. Sew shoulders and side seams together. Finish edges.



Craft:
craftzine.com



Fitz
For making individuals. www.fitzpatterns.com