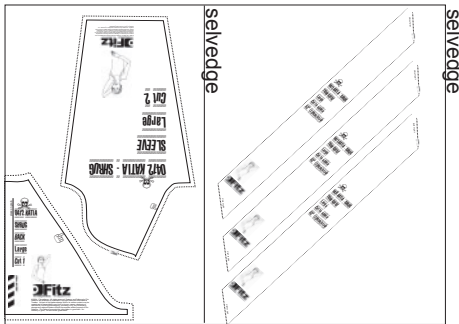




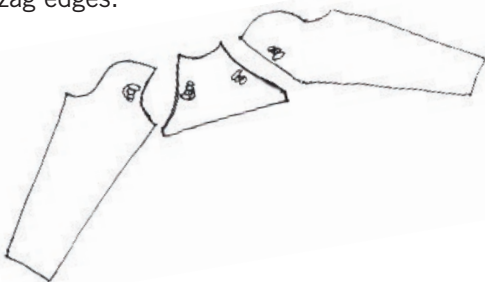
0412 KATIA Shrug

Not quite a jacket, more a set of sleeves with a back or back with sleeves, whatever, the shrug's the thing.

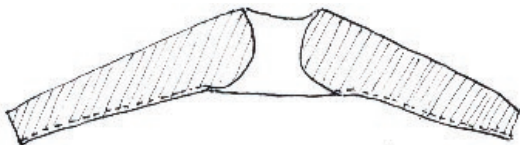
1. Cut out pattern. Cut as many strips with the edging guide to achieve 53"(134cm).



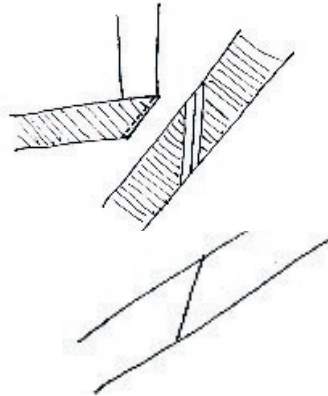
2. Pin sleeves to back, matching notch. Sew, press seams either side and then open and flat. Serge or zig zag edges.



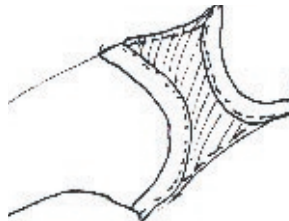
3. Fold sleeves over and sew. Press seams either side and then open as best you can.



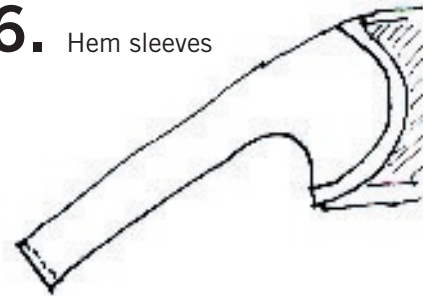
4. Join edging strips together. Press joins open flat. Press centre fold in edging folding wrong sides together.



5. Pin edging to right side of garment. Hide join under arm. Sew and serge/zig zag. Press open.



6. Hem sleeves



Fitz
For making individuals. www.fitzpatterns.com

© 2004 - Fitz patterns. All rights reserved. Designs, patterns and instructions by Fitz patterns are protected by Australian Copyright Laws and International Treaties. No part of this pattern/design and or its written content may be reproduced or transmitted in any form or by any means, electronic or mechanical, including photocopying, recording, or by any information storage and retrieval system without the express written consent of Fitz patterns. Fitz patterns present this information in good faith. No warranty is given, nor are results guaranteed.